
Contents

The photo-etching process	3
Advantages of textured surfaces	3
Test programme	4
Summary	7

This information is based on our present state of knowledge and is intended to provide general notes on our products and their uses. It should not therefore be construed as a warranty of specific properties of the products described or a warranty for fitness for a particular purpose.

Classified according to EU Directive 1999/45/EC
For further information see our "Material Safety Data Sheets".

Edition 4, 12.2007

The latest revised edition of this brochure is the English version,
which is always published on our web site www.uddeholm.com



SS-EN ISO 9001
SS-EN ISO 14001

Introduction

A wide variety of moulded parts are produced with a patterned or textured surface. Normally, the pattern is reproduced on the moulding surfaces of the tool by the photo-etching process.

The photo-etching process

Published information about the techniques employed by the specialist photo-etching companies is very limited. Essentially, however, the required pattern is transferred to the moulding surface by a photographic process. The pattern is then etched to the required depth by the application of an appropriate acid, under closely controlled condition.

Photo-etching can be performed both on complete tools or on specified areas of the tool only.

Photo-etching enables a wide variety of different patterns to be produced in virtually any tool. The patterns may

resemble leather or wood graining, for example, or be a straight forward line pattern with varying directions and depths. Typical applications are for car interior fittings, etc., and plastic casings for different kinds of machines and instruments. In recent years, photo-etching has become an increasingly popular and practical method for imparting attractive and appealing surfaces to different products.

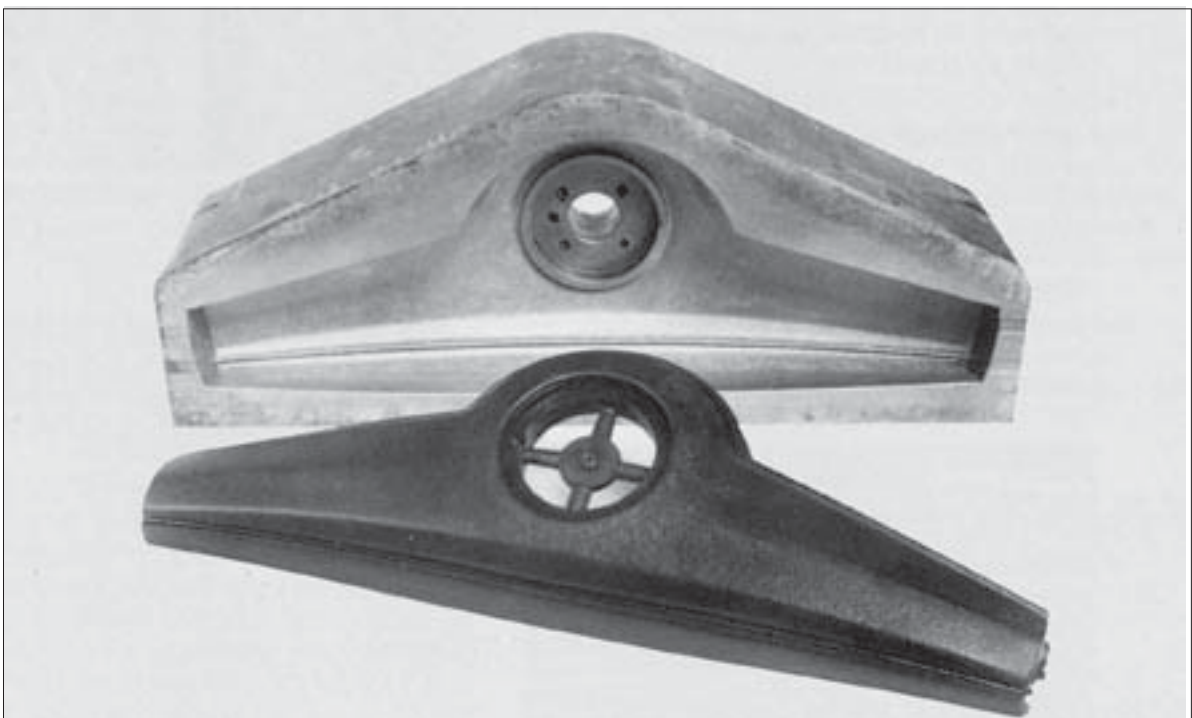
Advantages of textured surfaces

A textured surface hides minor surface flaws which may occur in manufacture or during further treatment and fitting. Because of this, the rejection rate for the finished products is lower. Moreover, photo-etching replaces the lengthy and expensive finish polishing process.

The product is given an aesthetically attractive surface finish. The surface is easier to grip than a bright surface, which facilitates holding and handling. Irritating reflections are largely avoided.

A further advantage is that finger prints and similar marks do not show up as much as on a bright surface.

This brochure deals with photo-etching as a finishing process, with the possibilities offered by it and with the factors which must be taken into account to ensure a satisfactory result. These factors were determined by a test programme carried out with the cooperation of a leading photo-etching company.



Textured mould and moulded part for automobile steering wheel.

Test programme

To ensure that the toolmaker and the tool-user gets the optimum results from Uddeholm tool steels that are photo-etched, Uddeholm Tooling has carried out a series of tests. The test programme examined a number of influencing factors, including:

- Photo-etching of different tool steel grades, annealed and hardened
- Flame-hardening, welding and EDM
- Grain flow direction of the tool steel
- Variations in steel analysis and cleanliness
- Material size

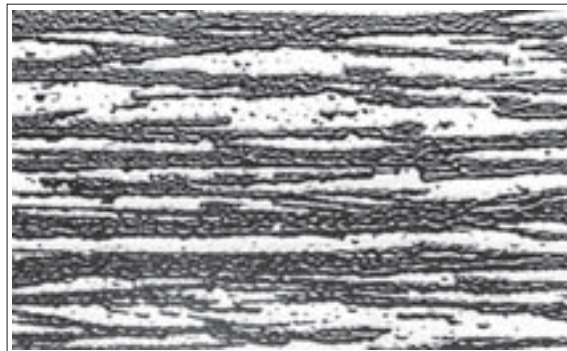
Several different tool steels were studied, by etching plates measuring 50 x 60 mm (2" x 2 1/4"). All surfaces were ground with a 280-grain grinding wheel. In one set of tests, all the specimens were etched under identical conditions in order to grade the "etchability" in terms of the amount of stock removed from the different material. After this, etching conditions were varied with the aim of producing optimum etching results.

The steels listed below have been examined in the first instance as longitudinal specimens (in the rolling direction of the material) in the soft-annealed state and also according to the parameters shown in the chart.

PHOTO-ETCHING OF DIFFERENT STEEL GRADES

Results

The etching results were assessed taking into account the etching depth, pattern similarity, side-etching effect and surface appearance. The surfaces have not only been visually appraised but also examined at a high magnification in order to detect and study any microscopic differences.



Photograph of a patterned surface.

Annealed material

Depending on the type of etching method used, a special etching media may be needed when etching steels with good corrosion resistance. This is valid for Uddeholm Stavax ESR, Uddeholm Mirrax ESR, Uddeholm Corrax and

Uddeholm Elmax. However, owing to its alloy content also Uddeholm Orvar Supreme and Uddeholm Calmax gives weaker etching than other grades when the standard media is used and in view of this the special media is recommended.

Uddeholm steel grade	AISI	Other parameters studied
RIGOR	A2	Hardness: 60 HRC High retained austenite content.
CALMAX		Hardness: 57 HRC
ORVAR SUPREME	H13	Hardness: 52 HRC Rough- and fine-spark-machined.
IMPAX SUPREME	P20	Analysis variation. Flame-hardened to 54 HRC. Surface and centre of large dimension. Welded with IMPAX electrode.
STAVAX ESR	420	Hardness: 300 HB 55 HRC Welded with STAVAX electrode.
ELMAX		Hardness: 58 HRC



Soft-annealed



Hardened to 55 HRC

Uddeholm Stavax ESR textured with special media.

The other steels examined show good results upon visual examination after having been etched by the standard process. When the surfaces are examined under the microscope (9 x magnification), some minor differences can be observed.

The observed differences normally have no practical significance. They nevertheless show that if a tool with inserts which are to be etched with the same pattern is being made it is advisable for material from the same bar or block to be used in all parts in order to get a pattern of identical and uniform appearance on the moulding. (See "Grain flow direction of the tool steel", page 6.)

Hardened material

All grades were examined in the fully hardened condition. Here, too, the four grades Uddeholm Orvar Supreme, Uddeholm Calmax, Uddeholm Stavax ESR and Uddeholm Elmax differ from the others in respect of etchability.

When the surfaces are studied under the microscope, some tendency to streakiness is discernible in some of the hardened specimens. The streaks are parallel to the direction of rolling, and the phenomenon is an expression of the normal rolling direction which appears in alloyed tool steels. The streakiness, however, is of such modest proportion that it lacks significance when using tool steels with normal degrees of segregation, but at the same time it demonstrates the importance of selecting a steel that is as homogeneous and uniformly worked as possible.

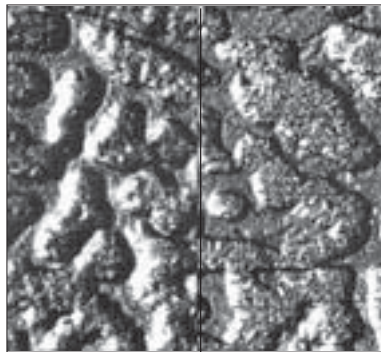
The presence of a high content of retained austenite in a hardened tool is normally a disadvantage. Etchability, however, is not affected even by a relatively high content of retained austenite according to a test performed on Uddeholm Rigor.

Nitrided material

When a tool or insert is to be nitrided, this must be done after photo-etching.

Flame-hardened material

The influence of flame-hardening on the etching of Uddeholm Impax Supreme was also studied and here there is a decided difference between the locally hardened zone and the hardened and tempered basic material. In the flame-hardened zone, a faint streakiness similar to that in hardened specimens is discernible. In addition, there is a difference in etching depth between flame-hardened and hardened and tempered material.



Basic material. Flame-hardened zone.

Flame-hardening, therefore, should be carried out after photo-etching, wherever possible.

Welding

In certain circumstances it may be necessary to weld a tool, for instance for repair purposes. Welding always severely affects the uniform structure of the parent material.

The weld metal and the base steel must be similar in composition if a welded surface of a plastic mould is to be textured via photo-etching. If not,

the response to etching will vary between the weld and the base metal and this will result in a witness mark on the plastic component. Welds in Uddeholm Impax Supreme, Uddeholm Stavax ESR, Uddeholm Mirrax ESR and Uddeholm Calmax with Impax Weld, Stavax Weld or Calmax Weld (or TIG-Weld) or Corrax TIG-Weld will normally not be discernible after photo-etching.

More information on welding is given in the brochure "Welding of Tool Steel".

Areas which have been welded should always be clearly indicated to the photo-etching company.

Electrical discharge machining (EDM)

If EDM is not carried out in the right way, some defects may remain in the surface of the material. The influence of spark-erosion on photo-etchability has therefore been studied. Specimens with both a rough-sparked and a fine-sparked surface were tempered at 250°C (480°F). Photo-etching on a rough-sparked surface gives a very poor result. Even after a careful fine-sparking operation, it may be difficult to get an acceptable result.

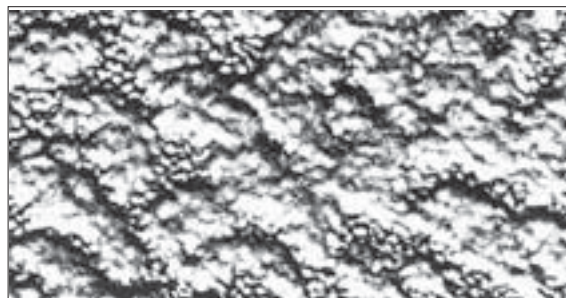


Photo-etching on a rough-sparked surface.

Tempering does not give an appreciable improvement. If doubts are entertained as to how the spark-machining has been carried out the material should always be ground or polished to remove any residual traces of the sparking. Special test kits are available for checking removal of residual effects after spark-erosion.

Areas which have been spark-eroded should be clearly indicated to the photo-etching company.

Grain flow direction of the tool steel

Calmax has been examined on both the lengthwise and crosswise direction in the soft-annealed state. No appreciable difference between the specimens was observed. For fine patterns, however, experience shows that some difference can occur. Where it is important that photo-etched patterns on different mould parts match exactly, e.g. when using inserts, the following procedure is strongly recommended:

1. Make **all** parts to be textured from the same bar or block of steel
2. Make sure that all surfaces to be textured have the longitudinal grain flow in the same direction

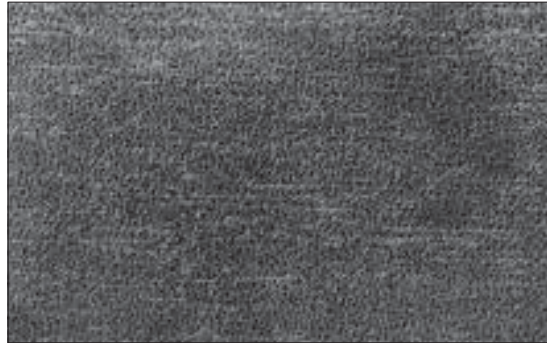
VARIATIONS IN STEEL ANALYSIS AND CLEANLINESS

There are always minor differences in the analysis of every steel to occur from one heat to another. In this context, two extremes in the analysis of Uddeholm Impax Supreme were examined, but no differences in the results of the etching were observable. Normal variations in analysis of Uddeholm Tooling tool steels thus have no influence on photo-etchability.

The cleanliness of the steel, and especially its sulphur content, can affect the appearance of photo-etched patterns. Uddeholm Impax Supreme pre-hardened mould steel is particularly suitable for photo-etching for two reasons: it has a very clean microstructure, being subjected to a vacuum degassing process during manufacture; it also has

a very low sulphur content (max. 0,010%).

There are, however, similar types of steels with far higher sulphur contents (0,08%), which can give rise to streakiness in photo-etching, as evident from the following photograph.



The photograph shows streakiness in photo-etching of a pre-hardened mould steel with high sulphur content.

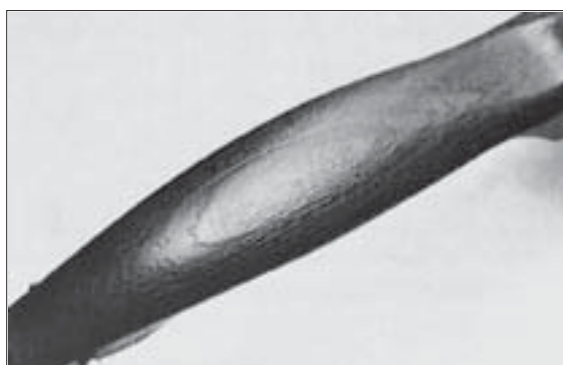
MATERIAL SIZE

When manufacturing materials in heavy sections differences in the microstructure of the material can be observed between the surface and the centre. In order to study the influence of these differences on the photo-etchability of Impax Supreme in the size 500 mm (20") dia., specimens from the surface and centre were photo-etched.



Surface. Centre. Uddeholm Impax Supreme Ø 500 mm (20").

No difference between the two specimens was observable.

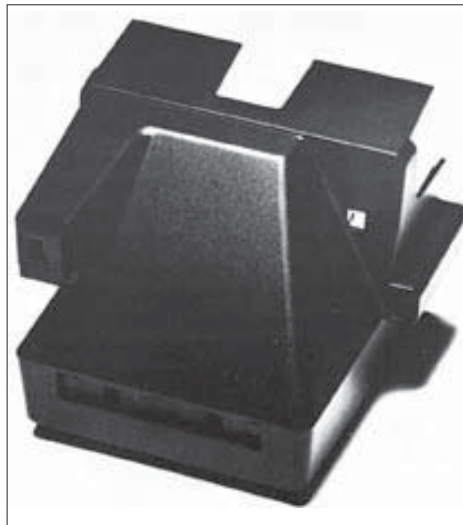


A wood-grain texture on a moulded handle for a saucepan.

Summary

Several different grades of Uddeholm Tooling tool steels have been tested for photo-etchability. The results of the etching tests and other experience gained can be summarized as follows:

- All of the grades examined can be photo-etched with satisfactory results. There are certain microscopic differences, but these normally have no practical significance whatsoever.
- Uddeholm Orvar Supreme, Uddeholm Calmax, Uddeholm Stavax ESR, Uddeholm Mirrax ESR and Uddeholm Elmax should be etched by a special process.
- If nitriding is to be carried out it must be done after photo-etching.
- Flame-hardening prior to photo-etching should be avoided, since the pattern will be etched differently in the flame-hardened zone and in hardened and tempered base material.
- A welded tool can in certain circumstances be photo-etched, but this is conditional upon using the same material in the weld as in the parent material.
- Spark-machined surfaces should be ground or polished in order to be on the safe side. A poor etching result will be obtained on surfaces marred by residual traces of spark-machining.
- Areas of tools which have been flame-hardened, welded or spark-eroded should always be clearly indicated to the photo-etching company.
- If several parts are included in a tool and are to be photo-etched with exactly the same pattern, the same grade of material and the same grain flow direction should be chosen for all the parts.
- Normal variations in analysis for the same grade of steel have no adverse influence. Steels with a clean microstructure and low sulphur content give the most accurate and consistent pattern reproduction.
- Different sizes of starting material of one and the same grade do not usually show any differences.
- Initial machining operations should be followed by stress-relieving prior to finish-machining.
- Coarser abrasives than 220 grain must not be used on surfaces which are to be photo-etched.



*Photo-textured body for Polaroid instant camera.
Mould material: Uddeholm Stavax ESR.*



Part of an automobile steering wheel produced from a photo-etched Uddeholm Impax Supreme mould.

Europe

Austria

Representative office

UDDEHOLM
Albstraße 10
DE-73765 Neuhausen
Telephone: +49 7158 9865-0
www.uddeholm.de

Belgium

UDDEHOLM
Europark Oost 7
B-9100 Sint-Niklaas
Telephone: +32 3 780 56 20
www.uddeholm.be

Croatia

BÖHLER UDDEHOLM Zagreb
d.o.o za trgovinu
Zitnjak b.b
10000 Zagreb
Telephone: +385 1 2459 301
Telefax: +385 1 2406 790
www.bohler-uddeholm.hr

Czech Republic

BÖHLER UDDEHOLM CZ s.r.o.
Division Uddeholm
U Silnice 949
161 00 Praha 6, Ruzyně
Telephone: +420 233 029 850,8
www.uddeholm.cz

Denmark

UDDEHOLM A/S
Kokmose 8, Bramdrupdam
DK-6000 Kolding
Telephone: +45 75 51 70 66
www.uddeholm.dk

Estonia

UDDEHOLM TOOLING AB
Silikatsiidi 7
EE-11216 Tallinn
Telephone: +372 655 9180
www.uddeholm.ee

Finland

OY UDDEHOLM AB
Ritakuja 1, PL 57
FI-01741 VANTAA
Telephone: +358 9 290 490
www.uddeholm.fi

France

Head office

UDDEHOLM
Z.I. de Mitry-Compans, 12 rue Mercier,
FR-77297 Mitry Mory Cedex
Telephone: +33 (0)1 60 93 80 10
www.uddeholm.fr

Branch offices

UDDEHOLM S.A.
77bis, rue de Vesoul
La Nef aux Métiers
FR-25000 Besançon
Telephone: +33 (0)381 53 12 19

LE POINT ACIERS
UDDEHOLM - Aciers à outils
Z.I. du Recou, Avenue de Champlevert
FR-69520 GRIGNY
Telephone: +33 (0)4 72 49 95 61

LE POINT ACIERS
UDDEHOLM - Aciers à outils
Z.I. Nord 27, rue François Rochema
FR-01100 OYONNAX
Telephone: +33 (0)4 74 73 48 66

Germany

Head office

UDDEHOLM
Hansaallee 321
DE-40549 Düsseldorf
Telephone: +49 211 5351-0
www.uddeholm.de

Branch offices

UDDEHOLM
Falkenstrasse 21
DE-65812 Bad Soden/TS
Telephone: +49 6196 6596-0

UDDEHOLM
Albstraße 10
DE-73765 Neuhausen
Telephone: +49 7158 9865-0

UDDEHOLM
Friederikenstraße 14b
DE-06493 Harzgerode
Telephone: +49 39484 727 267

Great Britain

UDDEHOLM DIVISION
BOHLER-UDDEHOLM (UK) LIMITED
European Business Park
Taylors Lane, Oldbury
GB-West Midlands B69 2BN
Telephone: +44 121 552 5511
Telefax: +44 121 544 2911
www.uddeholm.co.uk

Greece

STASSINOPOULOS-UDDEHOLM
STEEL TRADING S.A.
20, Athinon Street
GR-Piraeus 18540
Telephone: +30 210 4172 109
www.uddeholm.gr

SKLERO S.A.
Heat Treatment and Trading of Steel
Uddeholm Tool Steels
Industrial Area of Thessaloniki
P.O. Box 1123
GR-57022 Sindos, Thessaloniki
Telephone: +30 2310 79 76 46
www.sklero.gr

Hungary

UDDEHOLM TOOLING/BOK
Dunaharaszti, Jedlik Ányos út 25
HU-2331 Dunaharaszti 1. Pf. 110
Telephone/fax: +36 24 492 690
www.uddeholm.hu

Ireland

Head office:

UDDEHOLM DIVISION
BOHLER-UDDEHOLM (UK) LIMITED
European Business Park
Taylors Lane, Oldbury
UK-West Midlands B69 2BN
Telephone: +44 121 552 5511
Telefax: +44 121 544 2911
www.uddeholm.co.uk
Dublin:
Telephone: +353 1845 1401

Italy

UDDEHOLM
Divisione della Bohler Uddeholm
Italia S.p.A.
Via Palizzi, 90
IT-20157 Milano
Telephone: +39 02 39 49 211
www.uddeholm.it

Latvia

UDDEHOLM TOOLING LATVIA SIA
Piedrujas Street 7
LV-1035 Riga
Telephone: +371 7 702133
latvia@assab.com

Lithuania

UDDEHOLM TOOLING AB
BE PLIENAS IR METALAI
T. Masiulio 18B
LT-52459 Kaunas
Telephone: +370 37 370613, -669
www.besteel.lt

The Netherlands

UDDEHOLM
Isolatorweg 30
NL-1014 AS Amsterdam
Telephone: +31 20 581 71 11
www.uddeholm.nl

Norway

UDDEHOLM A/S
Jernkroken 18
Postboks 85, Kalbakken
NO-0902 Oslo
Telephone: +47 22 91 80 00
www.uddeholm.no

Poland

BOHLER UDDEHOLM POLSKA
Sp. z o.o./Co. Ltd.
ul. Kolejowa 291, Dziekanów Polski,
PL-05-092 Lomianki
Telephone: +48 22 429 2260, -203, -204
www.uddeholm.pl

Portugal

F RAMADA Açoes e Industrias S.A.
P.O. Box 10
PT-3881 Ovar Codex
Telephone: +351 256 580580
www.ramada.pt

Romania

BÖHLER-UDDEHOLM Romania SRL
Atomistilor Str. No 96-102
077125 - com. Magurele, Jud. Ilfov.
Telephone: +40 214 575007
Telefax: +40 214 574212

Russia

UDDEHOLM TOOLING CIS
9A, Lipovaya Alleya, Office 509
RU-197183 Saint Petersburg
Telephone: +7 812 6006194
www.uddeholm.ru

Slovakia

Bohler-Uddeholm Slovakia s.r.o.
divizia UDDEHOLM
Čsl.Armády 5622/5
SK-036 01 Martin
Telephone: +421 (0)434 212 030
www.uddeholm.sk

Slovenia

Representative office

UDDEHOLM
Divisione della Bohler Uddeholm
Italia S.p.A.
Via Palizzi, 90
IT-20157 Milano
Telephone: +39 02 39 49 211
www.uddeholm.it

Spain

Head office

UDDEHOLM
Guiñfó 690-692
ES-08918 Badalona, Barcelona
Telephone: +34 93 460 1227
www.acerosuddeholm.com

Branch office

UDDEHOLM
Barrio San Martín de Arteaga,132
Pol.Ind. Torrelarragoiti
ES-48170 Zamudio (Bizkaia)
Telephone: +34 94 452 13 03

Sweden

Head office

UDDEHOLM TOOLING SVENSKA AB
Aminogatan 25
SE-431 53 Mölndal
Telephone: +46 31 67 98 50
www.uddeholm.se

Branch offices

UDDEHOLM TOOLING SVENSKA AB
Box 45
SE-334 21 Anderstorp
Telephone: +46 371 160 15

UDDEHOLM TOOLING SVENSKA AB
Box 148
SE-631 03 Eskilstuna
Telephone: +46 16 15 79 00

UDDEHOLM TOOLING SVENSKA AB
Aminogatan 25
SE-431 53 Mölndal
Telephone: +46 31 67 98 70

UDDEHOLM TOOLING SVENSKA AB
Nya Tanneforsvägen 96
SE-582 42 Linköping
Telephone: +46 13 15 19 90

UDDEHOLM TOOLING SVENSKA AB
Derbyvägen 22
SE-212 35 Malmö
Telephone: +46 40 22 32 05

UDDEHOLM TOOLING SVENSKA AB
Honnörsgratan 24
SE-352 36 Växjö
Telephone: +46 470 457 90

Switzerland

HERTSCH & CIE AG
General Wille Strasse 19
CH-8027 Zürich
Telephone: +41 44 208 16 66
www.hertsch.ch

Turkey

Head office

ASSAB Korkmaz Celik A.S.
Organize Sanayi Bölgesi
2. Cadde No: 26 Y. Dudullu
34776 Umraniye
TR-Istanbul
Telephone: +90 216 420 1926
www.assabkorkmaz.com

America

Argentina

ACEROS BOEHLER UDDEHOLM S.A
Mozart 40
1619-Centro Industrial Garin
Garin-Prov.
AR-Buenos Aires
Telephone: +54 332 7444 440
www.uddeholm.com.ar

Brazil

AÇOS BOHLER-UDDEHOLM DO
BRASIL LTDA- DIV. UDDEHOLM
Estrada Yae Massumoto, 353
CEP 09842-160
BR-Sao Bernardo do Campo - SP Brazil
Telephone: +55 11 4393 4560, 4554
www.uddeholm.com.br

Canada

Head Office & Warehouse
BOHLER-UDDEHOLM LIMITED
2595 Meadowvale Blvd.
Mississauga, ON L5N 7Y3
Telephone: +1 905 812 9440
www.bucanada.com

Branch Warehouses
BOHLER-UDDEHOLM LIMITED
3521 Rue Ashby
St. Laurent, QC H4R 2K3
Telephone: +1 514 333 8000

BOHLER-UDDEHOLM LIMITED
730 Eaton Way - Unit #10
New Westminster, BC V3M 6J9
Telephone: +1 604 525 3354

Heat Treating
BOHLER-UDDEHOLM
THERMO-TECH
2645 Meadowvale Blvd.
Mississauga, ON L5N 7Y4
Telephone: +1 905 812 9440

Colombia

AXXECOL S.A.
Carrera 35 No 13-20
Apartado Aereo 80718
CO-Bogota 6
Telephone: +57 1 2010700
www.axxecol.com

ASTEKO S.A.
Carrera 54 No 35-12
Apartado Aereo 663
CO-Medellin
Telephone: +57 4 2320122
www.asteco.com

Dominican Republic

RAMCA, C. POR A.
P-2289
P.O. Box 025650
Miami, Fl. 33102
Telephone: +1 809 682 4011
domrep@assab.com

Ecuador

IVAN BOHMAN C.A.
Apartado 1317
Km 6 1/2 Via a Daule
Guayaquil
Telephone: +593 42 254111
www.ivanbohman.com.ec

IVAN BOHMAN C.A.
Casilla Postal 17-01370
Quito
Telephone: +593 2 2248001
www.ivanbohman.com.ec

El Salvador

ACAVIDA DE C.V.
25 Ave. Sur, no 763
Zona 1
SV-San Salvador
Telephone: +503 22 71 1700
www.acavisa.com

Guatemala

IMPORTADORA ESCANDINAVA
Apartado postal 11C
GT-Guatemala City
Telephone: +502 23 659270
guatemala@assab.com

Honduras

ACAVIDA DE C.V.
25 Ave. Sur, no 763
Zona 1
SV-San Salvador
Telephone: +503 22 71 1700
www.acavisa.com

Mexico

Head office
ACEROS BOHLER UDDEHOLM S.A.
de C.V.
Calle Ocho No 2, Letra "C"
Fraccionamiento Industrial Alce Blanco
C.P. 52787 Naucalpan de Juarez
MX-Estado de Mexico
Telephone: +52 55 9172 0242
www.bu-mexico.com

Branch office
BOHLER-UDDEHOLM MONTERREY,
NUEVO LEON
Lerdo de Tejada No.542
Colonia Las Villas
MX-66420 San Nicolas de Los Garza,
N.L.
Telephone: +52 81 83 525239

Peru

C.I.P.E.S.A.
Av. Oscar R. Benavides
(ante Colonial) No. 2066
PE-Lima 1
Telephone: +51 1 336 8673
peru@assab.com

U.S.A.

Head office and Warehouse
BOHLER-UDDEHOLM
CORPORATION
2505 Millennium Drive
Elgin IL 60124
Telephone: 1-630-883-3000 or
1-800-652-2520
Sales phone: 1-800-638-2520
www.bucorp.com

Region East Warehouse
BOHLER-UDDEHOLM
CORPORATION
548 Clayton Ct.
Wood Dale IL 60191

Region Central Warehouse
BOHLER-UDDEHOLM
CORPORATION
548 Clayton Ct.
Wood Dale IL 60191

Region West Warehouse
BOHLER-UDDEHOLM
CORPORATION
9331 Santa Fe Springs Road
Santa Fe Springs, CA 90670

Venezuela

PRODUCTOS HUMAR C.A.
Av. Bolivar, Zona Industrial
La Trinidad
Edificio. Distribuidora Agrofor, C.A.
Piso 3, VE-Caracas 1080
Telephone: +58 212 942 1994 or
+58 212 915 7073
humar@assab.com

Other Countries in America

ASSAB INTERNATIONAL AB
Box 42
SE-171 11 Solna, Sweden
Telephone: +46 8 564 616 70
www.assab.se

Asia & Pacific

Australia

BOHLER UDDEHOLM Australia
129-135 McCreddie Road
Guildford NSW 2161
Private Bag 14
AU-Sydney
Telephone: +61 2 9681 3100
www.buau.com.au

Bangladesh

ASSAB INTERNATIONAL AB
P.O. Box 17595
Jebel Ali
AE-Dubai
Telephone: +971 488 12165
www.assab.se

North China

Head office
ASSAB Tooling (Beijing) Co Ltd
No.10A Rong Jing Dong Jie
Beijing Economic Development Area
Beijing 100176, China
Telephone: +86 10 6786 5588
www.assabsteels.com

Branch offices
ASSAB Tooling (Beijing) Ltd
Dalian Branch
8 Huanghai Street, Haerbin Road
Economic & Technical Develop. District
Dalian 116600, China
Telephone: +86 411 8761 8080

ASSAB Qingdao Office
Room 2521, Kexin Mansion
No. 228 Liaoning Road, Shibei District
Qingdao 266012, China
Telephone: +86 532 8382 0930

ASSAB Tianjin Office
No.12 Puwangli Wanda Xincheng
Xinyibai Road, Beichen District
Tianjin 300402, China
Telephone: +86 22 2672 0006

Central China

Head office
ASSAB Tooling Technology
(Shanghai) Co Ltd
No. 4088 Humin Road
Xinzhuang Industrial Zone
Shanghai 201108, China
Telephone: +86 21 5442 2345
www.assabsteels.com

Branch offices
ASSAB Tooling Technology
(Ningbo) Co Ltd
No. 218 Longjiaoshan Road
Vehicle Part Industrial Park
Ningbo Economic & Technical Dev.
Zone
Ningbo 315806, China
Telephone: +86 574 8680 7188

ASSAB Tooling Technology
(Chongqing) Co Ltd
Plant C, Automotive Industrial IPark
Chongqing Economic & Technological
Development Zone
Chongqing 401120, China
Telephone: +86 23 6745 5698

South China

Head office
ASSAB Steels (HK) Ltd
Room 1701-1706
Tower 2 Grand Central Plaza
138 Shatin Rural Committee Road
Shatin NT - Hong Kong
Telephone: +852 2487 1991
www.assabsteels.com

Branch offices
ASSAB Tooling (Dongguan) Co Ltd
Northern District
Song Shan Lake Science & Technology
Industrial Park
Dongguan 523808, China
Telephone: +86 769 2289 7888
www.assabsteels.com

ASSAB Tooling (Xiamen) Co Ltd
First Floor Universal Workshop
No. 30 Huli Zone
Xiamen 361006, China
Telephone: +86 592 562 4678

Hong Kong

ASSAB Steels (HK) Ltd
Room 1701-1706
Grand Central Plaza, Tower 2
138 Shatin Rural Committee Road
Shatin NT, Hong Kong
Telephone: +852 2487 1991
www.assabsteels.com

India

ASSAB Sripad Steels LTD
T 303 D.A.V. Complex
Mayur Vihar Ph I Extension
IN-Delhi-110 091
Telephone: +91 11 2271 2736
www.assabsripad.com

ASSAB Sripad Steels LTD
709, Swastik Chambers
Sion-Trombay Road
Chembur
IN-Mumbai-400 071
Telephone: +91 22 2522-7110, -8133
www.assabsripad.com

ASSAB Sripad Steels LTD
Padmalaya Towers
Janaki Avenue
M.R.C. Nagar
IN-Chennai-600 028
Telephone: +91 44 2495 2371
www.assabsripad.com

ASSAB Sripad Steels LTD
19X, D. P. P. Road
Naktola Post Office
IN-Kolkata-700 047
Telephone: +91 (33) 400 1645
www.assabsripad.com

ASSAB Sripad Steels LTD
Ground floor, Plot No 11-6-8
Opp IDPL Factory Out Gate
Balanagar
IN-Hyderabad-500 037
Telephone: +91 (40) 2377 8148
www.assabsripad.com

Indonesia

Head office
PT ASSAB Steels Indonesia
Jl. Rawagelam III No. 5
Kawasan Industri Puloagung
Jakarta 13930, Indonesia
Telephone: +62 21 461 1314
www.assabsteels.com

Branch offices

SURABAYA BRANCH
Jl. Berbek Industri 1/23
Surabaya Industrial Estate, Rungkut
Surabaya 60293, East Java, Indonesia
Telephone: +62 31 843 2277

MEDAN BRANCH
Komplek Griya Riatour Indah
Blok A No.138
Jl. T. Amir Hamzah
Halvetia Timur, Medan 20124
Telephone: +62 61 847 7935/6

BANDUNG BRANCH
Komp. Ruko Bumi Kencana
Jl. Titian Kencana Blok E
No.5 Bandung 40233
Telephone: +62 22 604 1364

TANGERANG BRANCH
Pusat Niaga Cibodas
Blok C No. 7 Tangerang
Telephone: +62 21 921 9596, 551 2732

SEMARANG BRANCH
Jl. Imam Bonjol No.155
R.208 Semarang 50124
Telephone: +62 358 8167

Iran

ASSAB INTERNATIONAL AB
P.O. Box 19395
IR-1517 TEHRAN
Telephone: +98 21 888 35392
www.assabiran.com

Israel

**PACKER YADPAZ QUALITY
STEELS Ltd**
P.O. Box 686
Ha-Yarkon St. 7, Industrial Zone
IL-81106 YAVNE
Telephone: +972 8 932 8182
www.packer.co.il

Japan

UDDEHOLM KK
Atago East Building
3-16-11 Nishi Shinbashi
Minato-ku, Tokyo 105-0003, Japan
Telephone: + 81 3 5473 4641
www.assabsteels.com

Jordan

ENGINEERING WAY Est.
P.O. Box 874
Abu Alanda
JO-AMMAN 11592
Telephone: +962 6 4161962
engineeringway@assab.com

Malaysia

Head office
ASSAB Steels (Malaysia) Sdn Bhd
Lot 19, Jalan Perusahaan 2
Batu Caves Industrial Estate
68100 Batu Caves
Selangor Malaysia
Telephone: +60 3 6189 0022
www.assabsteels.com

Branch offices

BUTTERWORTH BRANCH
Plot 146a
Jalan Perindustri Bukit Minyak 7
Kawasan Perindustri Bukit Minyak
14000 Bukit Mertajam, SPT Penang
Telephone: +60 4 507 2020

JOHOR BRANCH
No. 8, Jalan Persiaran Teknologi
Taman Teknologi
81400 Senai
Johor DT, Malaysia
Telephone: +60 7 598 0011

New Zealand

VIKING STEELS
25 Beach Road, Otahuhu
P.O. Box 13-359, Onehunga
NZ-Auckland
Telephone: +64 9 270 1199
www.ssm.co.nz

Pakistan

ASSAB International AB
P.O. Box 17595
Jebel Ali
AE-Dubai
Telephone: +971 488 12165
www.assab.se

Philippines

**ASSOCIATED SWEDISH STEELS
PHILS Inc.**
No. 3 E. Rodriguez Jr., Avenue
Bagong Ilog, Pasig City
Philippines
Telephone: +632 671 1953/2048
www.assabsteels.com

Republic of Korea

Head office
ASSAB Steels (Korea) Co Ltd
116B-8L, 687-8, Kojan-dong
Namdong-ku
Incheon 405-310, Korea
Telephone: +82 32 821 4300
www.assabsteels.com

Branch offices

BUSAN BRANCH
14B-5L, 1483-9, Songjeong-dong
Kangseo-ku, Busan 618-270, Korea
Telephone: +82 51 831 3315

DAEGU BRANCH
Room 27, 7-Dong2 F
Industry Materials Bldg.1629
Sangyeog-Dong, Buk-Ku
Korea-Daegu 702-710
Telephone: +82 53 604 5133

Lebanon

WARDE STEEL & METALS SARL MET
Charles Helou Av, Warde Bldg
P.O. Box 165886
LB-Beirut
Telephone: +961 1 447228
lebanon@assab.com

Saudi Arabia

ASSAB INTERNATIONAL AB
P.O. Box 255092
SA-Riyadh 11353
Telephone: +966 1 4466542
assab@emirates.net.ae

Singapore

Head office Pacific
ASSAB Pacific Pte Ltd
171, Chin Swee Road
No. 07-02, SAN Centre
SG-Singapore 169877
Telephone: +65 6534 5600
www.assabsteels.com

Jurong

ASSAB Steels Singapore (Pte) Ltd
18, Penjuru Close
SG-608616 Singapore
Telephone: +65 6862 2200

Sri Lanka

GERMANIA COLOMBO PRIVATE Ltd.
451/A Kandy Road
LK-Kelaniya
Telephone: +94 11 2913556
www.iwsholdings.com

Syria

WARDE STEEL & METALS SARL MET
Charles Helou Av, Warde Bldg
P.O. Box 165886
LB-Beirut
Telephone: +961 1 447228
lebanon@assab.com

Taiwan

Head office
ASSAB Steels (Taiwan) Co Ltd
No. 112 Wu Kung 1st Rd.
Wu Ku Industry Zone
TW-Taipei 248-87, Taiwan (R.O.C.)
Telephone: +886 2 2299 2849
www.assabsteels.com

Branch offices

NANTOU BRANCH
No. 10, Industry South 5th Road
Nan Kang Industry Zone
Nantou 540-66, Taiwan (R.O.C.)
Telephone: +886 49 225 1702
TAINAN BRANCH
No. 180, Yen He Street,
Yong Kang City
Tainan 710-82, Taiwan (R.O.C.)
Telephone: +886 6 242 6838

Thailand

ASSAB Steels (Thailand) Ltd
9/8 Soi Theedintai,
Taeparak Road, Bangplee,
Samutprakarn 10540, Thailand
Telephone: +66 2 385 5937,
+66 2 757 5017
www.assabsteels.com

United Arab Emirates

ASSAB INTERNATIONAL AB
P.O. Box 17595
Jebel Ali
AE-Dubai
Telephone: +971 488 12165
www.assab.se

Vietnam

CAM Trading Steel Co Ltd
90/8 Block 5, Tan Thoi Nhat Ward
District 12, Ho Chi Minh City
Vietnam
Telephone: +84 8 5920 920
www.assabsteels.com

Other Asia

ASSAB INTERNATIONAL AB
Box 42
E-171 11 Solna, Sweden
Telephone: +46 8 564 616 70
www.assab.se

Africa

Egypt

**MISR SWEDEN FOR
ENGINEERING IND.**
Montaser Project No 20
Flat No 14
Al Ahram Street-El Tabia
EG-Giza Cairo
Telephone: +254 20 7797751
www.assab.se

Kenya

SANDVIK Kenya Ltd
P.O. Box 18264
Post code 00500
KE-Nairobi
Telephone: +254 20 532 866
info@sandvik.co.ke

Morocco

MCM Distribution
4 Bis, Rue 8610 - Z.I.
2035 Charguia 1
TN-Tunis
Telephone: + 216 71 802 479

South Africa

UDDEHOLM Africa (Pty.) Ltd.
P.O. Box 539
ZA-1600 Isando/Johannesburg
Telephone: +27 11 974 2791
www.bohler-uddeholm.co.za

Tunisia

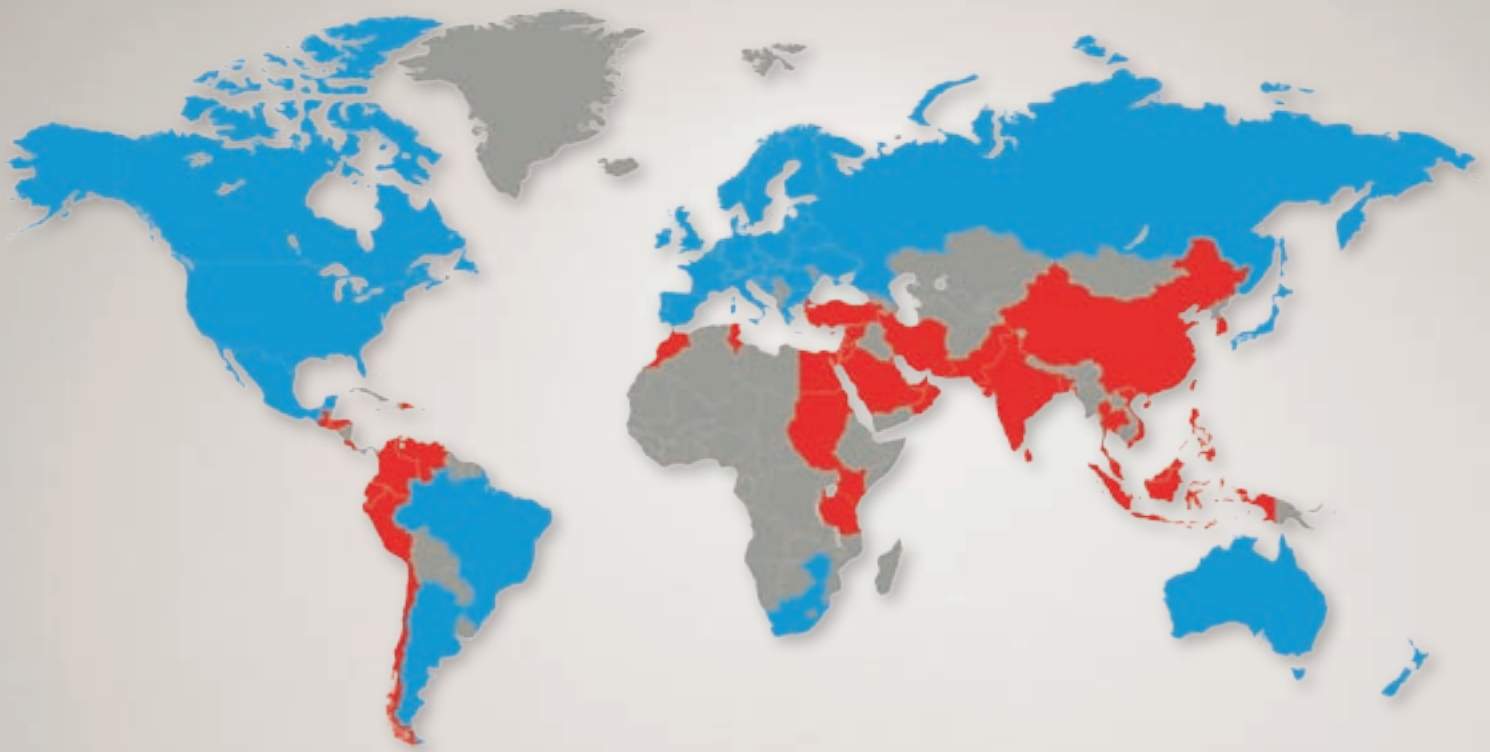
MCM Distribution
4 Bis, Rue 8610 - Z.I.
2035 Charguia 1
TN-Tunis
Telephone: + 216 71 802 479
www.mcm.com.tn

Zimbabwe

Representative office:
UDDEHOLM Africa (Pty.) Ltd.
P.O. Box 539
ZA-1600 Isando/Johannesburg
Telephone: +27 11 974 2781
www.bohler-uddeholm.co.za

Other African Countries

ASSAB INTERNATIONAL AB
Box 42
SE-171 11 Solna, Sweden
Telephone: +46 8 564 616 70
www.assab.se



Network of excellence

Uddeholm is present on every continent. This ensures you high-quality Swedish tool steel and local support wherever you are. Assab is our wholly-owned subsidiary and exclusive sales channel, representing Uddeholm in various parts of the world. Together we secure our position as the world's leading supplier of tooling materials.

Uddeholm is the world's leading supplier of tooling materials. This is a position we have reached by improving our customers' everyday business. Long tradition combined with research and product development equips Uddeholm to solve any tooling problem that may arise. It is a challenging process, but the goal is clear – to be your number one partner and tool steel provider.

Our presence on every continent guarantees you the same high quality wherever you are. Assab is our wholly-owned subsidiary and exclusive sales channel, representing Uddeholm in various parts of the world. Together we secure our position as the world's leading supplier of tooling materials. We act worldwide, so there is always an Uddeholm or Assab representative close at hand to give local advice and support. For us it is all a matter of trust – in long-term partnerships as well as in developing new products. Trust is something you earn, every day.

For more information, please visit www.uddeholm.com or www.assab.com