



### Application: Cylinder Liner

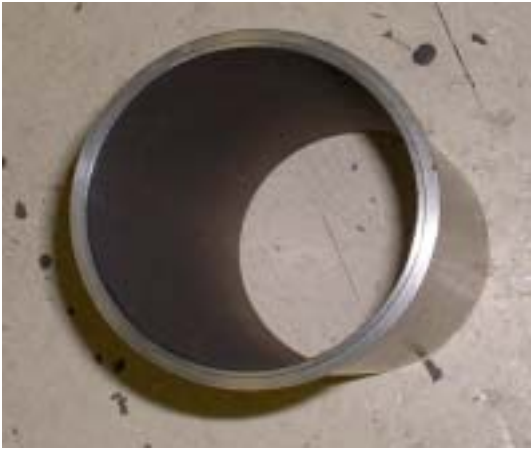
## Better tuning with Impax Supreme liner



When tuning cars, reliability of the components delivering the power is everything. Together with a tuning company in Sweden, Uddeholm has made tests with racing cylinder liners manufactured in **Impax Supreme**.

Conventional material cracks because of the high pressure developed in the engine. The original material is not hard enough for those kinds of pressures.

**Impax Supreme** is more ductile and has higher resistance to wear, resulting in more reliable motors which can deliver more power.



### Characteristics

<i>Impax Supreme</i>	
<i>Delivery hardness &amp; Maximum hardness</i>	Prehardened to 300 HB, maximum hardness approx. 50 HRC. Good response to induction hardening.
<i>Strength</i>	Delivery condition: $R_m=1020 \text{ N/mm}^2$ , $R_{p0,2}=900 \text{ N/mm}^2$
<i>Toughness</i>	Charpy V approx. 27 J at 21 °C
<i>Fatigue</i>	The clean material ensures good fatigue properties.